

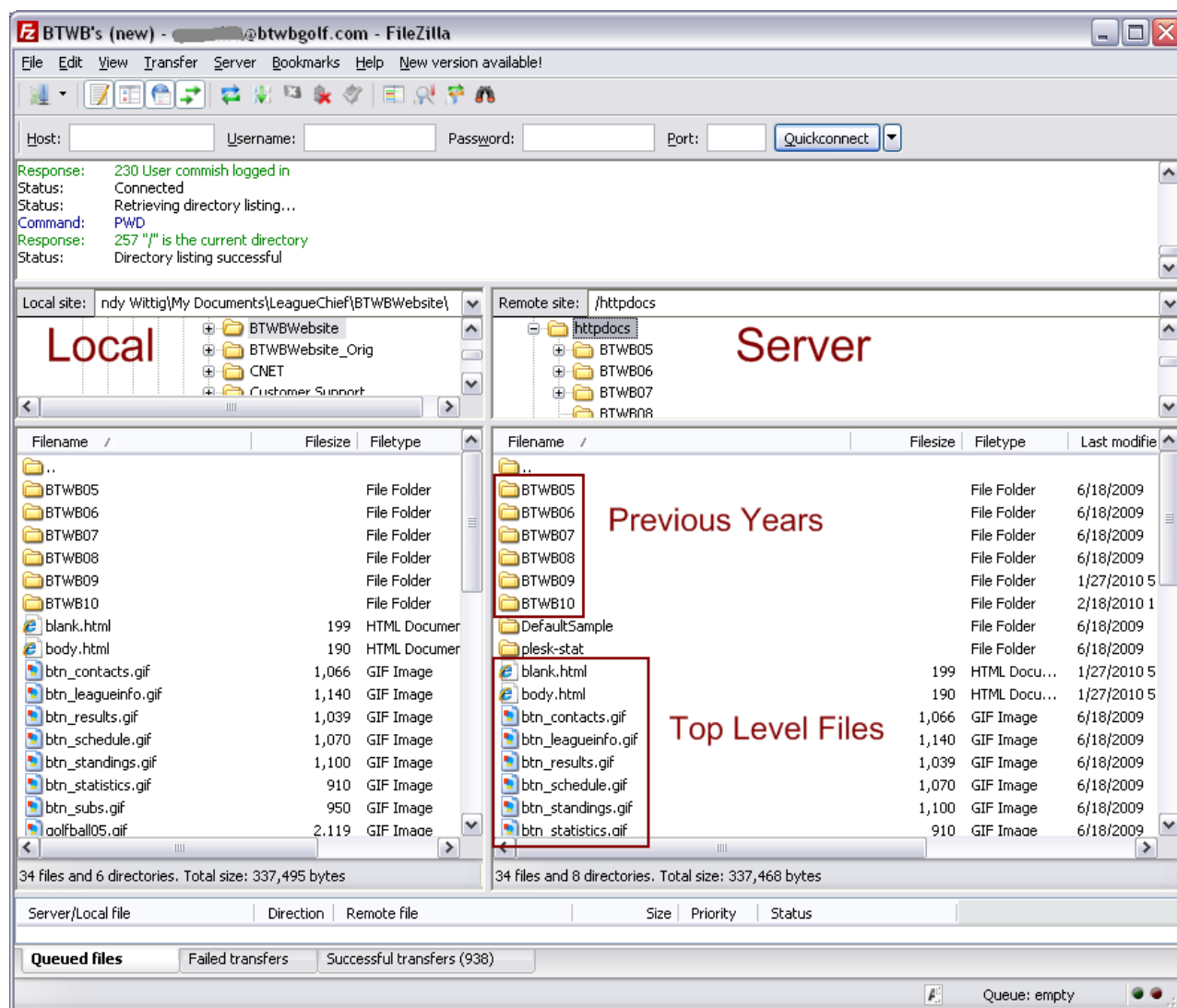
How to include previous year(s) on your website.

The standard version of LeagueChief offers the ability to have the current year published to your website. If you have previous years of data, you can perform the following steps to include the data on your website. Many users also customize their website to include links to other pages.

Prerequisite: You need to have an FTP (File Transfer Protocol) program that allows you to access your Web server. You will use this program to move files around on the server. (i.e. a great free program is Filezilla)

IMPORTANT: Do these steps **before** you generate/publish your new year's League.

In the following picture, the "Local" represents your local machine and the "Server" is the Web server. The "Previous Years" are the individual league years located on the server, and the "Top Level" are the files that control the current year.



The first thing to do is get all of the files from your server into a local working directory, and also make an original copy of them.

- 1) By using an FTP program, connect to your web server. Each web server is a little different on where your files are stored. You may find them in one of the following locations:
 - a. at the Root level
 - b. httpdocs
 - c. public_html
- 2) Copy all of files and directories from your Web server to your local hard drive.
- 3) In Explorer, locally make a copy of the entire directory structure so you have an unchanged copy on your hard drive as well. (i.e. copy it as something like **"BTWBWebsite_Orig"**).
- 4) At this point, you have 2 copies of your website locally on your hard drive. The Original copy and the copy we will be modifying and sending some files to the server.

Now you are ready to start modifying the files:

- 1) On the local hard drive in the Top Level directory, open the **top.html** file in a text editor.
- 2) If you had customized the page last season (i.e. added links to previous years), you will want to comment out (or remove) the individual years since you won't want them to show up on the individual year's pages. This can be accomplished by adding "`<!-- -->`" around the content. (i.e.: change it to look like this: `<!--2008</a -->`)
- 3) You will also notice the links to the content in the specific league directory. You will want to remove the path from those links. Here's an example of what it may currently look like:

```
<div class="halfmoon">
<ul>
<li><a href="BTWB09/schedule.html" target="BodyFrame"><span>Schedule</span></a></li>
<li><a href="BTWB09/standings.html" target="LeftFrame"><span>Standings</span></a></li>
<li><a href="BTWB09/results.html" target="LeftFrame"><span>Results</span></a></li>
<li><a href="BTWB09/contacts.html" target="BodyFrame"><span>Players</span></a></li>
<li><a href="BTWB09/subs.html" target="BodyFrame"><span>Subs</span></a></li>
<li><a href="BTWB09/rules.html" target="BodyFrame"><span>Info</span></a></li>
<li><a href="BTWB09/contacts_stats.html" target="BodyFrame"><span>Statistics</span></a></li>
<li><a href="BTWB09/contacts_hr.html" target="BodyFrame"><span>Rankings</span></a></li>
</ul>
</div>
```

and here's an example of what you should **change it to:**

```
<div class="halfmoon">
<ul>
<li><a href="/schedule.html" target="BodyFrame"><span>Schedule</span></a></li>
<li><a href="/standings.html" target="LeftFrame"><span>Standings</span></a></li>
<li><a href="/results.html" target="LeftFrame"><span>Results</span></a></li>
<li><a href="/contacts.html" target="BodyFrame"><span>Players</span></a></li>
<li><a href="/subs.html" target="BodyFrame"><span>Subs</span></a></li>
<li><a href="/rules.html" target="BodyFrame"><span>Info</span></a></li>
<li><a href="/contacts_stats.html" target="BodyFrame"><span>Statistics</span></a></li>
<li><a href="/contacts_hr.html" target="BodyFrame"><span>Rankings</span></a></li>
</ul>
</div>
```

Notice how we're changing the pathing to be the same directory as where the top.html file is located; it will no longer look in a sub directory.

4. Now we'll be changing the **index.html** file to do something similar. Open the file in the top level directory. Here's an example of what the file may currently look like:

```
<frameset rows="155,*"border="0">
  <frame
name="TopFrame"src="./top.html"marginwidth="10"marginheight="10"scrolling="no"frameborder="4">
    <frameset rows="100%,"border="0"noresize<&t;>
      <frameset cols="125,*"border="0">
        <frame
name="LeftFrame"src="./BTWB09/results.html"marginwidth="10"marginheight="10"scrolling="auto"frameborder="0">
          <frame
name="BodyFrame"src="./BTWB09/body.html"marginwidth="10"marginheight="10"scrolling="auto"frameborder="0">
            </frameset>
          </frameset>
        </frameset>
      </frameset>
    </frameset>
```

We will want to **change these** to not include the "BTWB09" sub-directory.

```
<frameset rows="155,*"border="0">
  <frame
name="TopFrame"src="./top.html"marginwidth="10"marginheight="10"scrolling="no"frameborder="4">
    <frameset rows="100%,"border="0"noresize<&t;>
      <frameset cols="125,*"border="0">
        <frame
name="LeftFrame"src="./results.html"marginwidth="10"marginheight="10"scrolling="auto"frameborder="0">
          <frame
name="BodyFrame"src="./body.html"marginwidth="10"marginheight="10"scrolling="auto"frameborder="0">
            </frameset>
          </frameset>
        </frameset>
      </frameset>
    </frameset>
```

Now it's time to copy the files back to the Server

- 4) **IMPORTANT:** First locally, copy all of the files from the top level directory down into the Previous Year's directory. This includes all files (about 24 files). (i.e. you will be copying them to a directory such as: **BTWB09**.) The idea here is that the individual directory is self contained and can be navigated by the end user from a Web Browser.
- 5) Open the FTP program, and copy these top level files to the League directory (i.e. **BTWB09**). Let it overwrite any files if it warns you.

Test the navigation to the Previous Year.

1. With an Internet Browser, navigate to your website on the actual web server. You should see the data as you did before. (i.e. www.btwbgolf.com)
2. Now test the last year directory by adding the League directory to the URL you are browsing to. (i.e. www.btwbgolf.com/BTWB09) Test the navigation throughout all of the links. You should see no broken links.

3. If things look good, you can continue on to the next steps. If not, make sure you worked thru the previous steps correctly.

Now you are ready to Generate/Publish your new season's website in LeagueChief.

1. Create your new league in LeagueChief. Assign Teams, Players, and Subs. Assign the Schedule and optionally the Matches (if you know them at this time). Also set up any Rules/Information (contained on the Website Tab).
2. Generate the top level website. This is done from the Website tab.
3. If you have a custom logo for your league, copy your logo.gif into the newly generated website directories. (i.e. **c:/Temp/LeagueChief/BTWB10/WebContent** and also **c:/Temp/LeagueChief/BTWB10/WebPublish**).
4. Publish the top level website from the Website tab.
5. Navigate to your webpage via the Browser. i.e. www.btwbgolf.com
6. You should see your new season's website display. Since it's the standard website, you won't see any links to the previous season.
7. If it looks good, then you can continue on.
8. Optionally, you can also go into Score Entry and publish an update to the web page to include the Schedule, Players, Subs, Rules, etc.

Now you are ready to add the link to the previous year.

1. Open the **Index.html** file in a text editor from the **c:/Temp/LeagueChief/BTWB10/WebContent** directory. It will look similar to the following:

```
<!DOCTYPE HTML PUBLIC "-//W3C//DTD HTML 4.0 Transitional//EN">
<html>
<link rel=stylesheet href=st.css type=text/css>
<head><title>This is your League Name 2010</title></head>
<body class=top><table><tr>
<td class=pgTitleName width="100%">Your League Name</td>
<td width="40%" align=right>&nbsp;</td>
<td><a href="http://www.leaguechief.com" target="page"></a><br><br></td></tr>
<tr align=left><td colspan=5>
<div class="halfmoon">
<ul>
<li><a href="BTWB10/schedule.html" target="BodyFrame"><span>Schedule</span></a></li>
<li><a href="BTWB10/standings.html" target="LeftFrame"><span>Standings</span></a></li>
<li><a href="BTWB10/results.html" target="LeftFrame"><span>Results</span></a></li>
<li><a href="BTWB10/contacts.html" target="BodyFrame"><span>Players</span></a></li>
<li><a href="BTWB10/subs.html" target="BodyFrame"><span>Subs</span></a></li>
<li><a href="BTWB10/rules.html" target="BodyFrame"><span>Info</span></a></li>
<li><a href="BTWB10/contacts_stats.html" target="BodyFrame"><span>Statistics</span></a></li>
<li><a href="BTWB10/contacts_hr.html" target="BodyFrame"><span>Rankings</span></a></li>
</ul>
</div>
</td></tr>
<tr height="15"><td bgcolor="#B7CC7C"colspan=4>&nbsp;</td></tr>
</body></html>
```

2. Now we're ready to make the changes to add the link. Make the **following changes**. **IMPORTANT:** Notice that the link is before the `</td></tr>`

